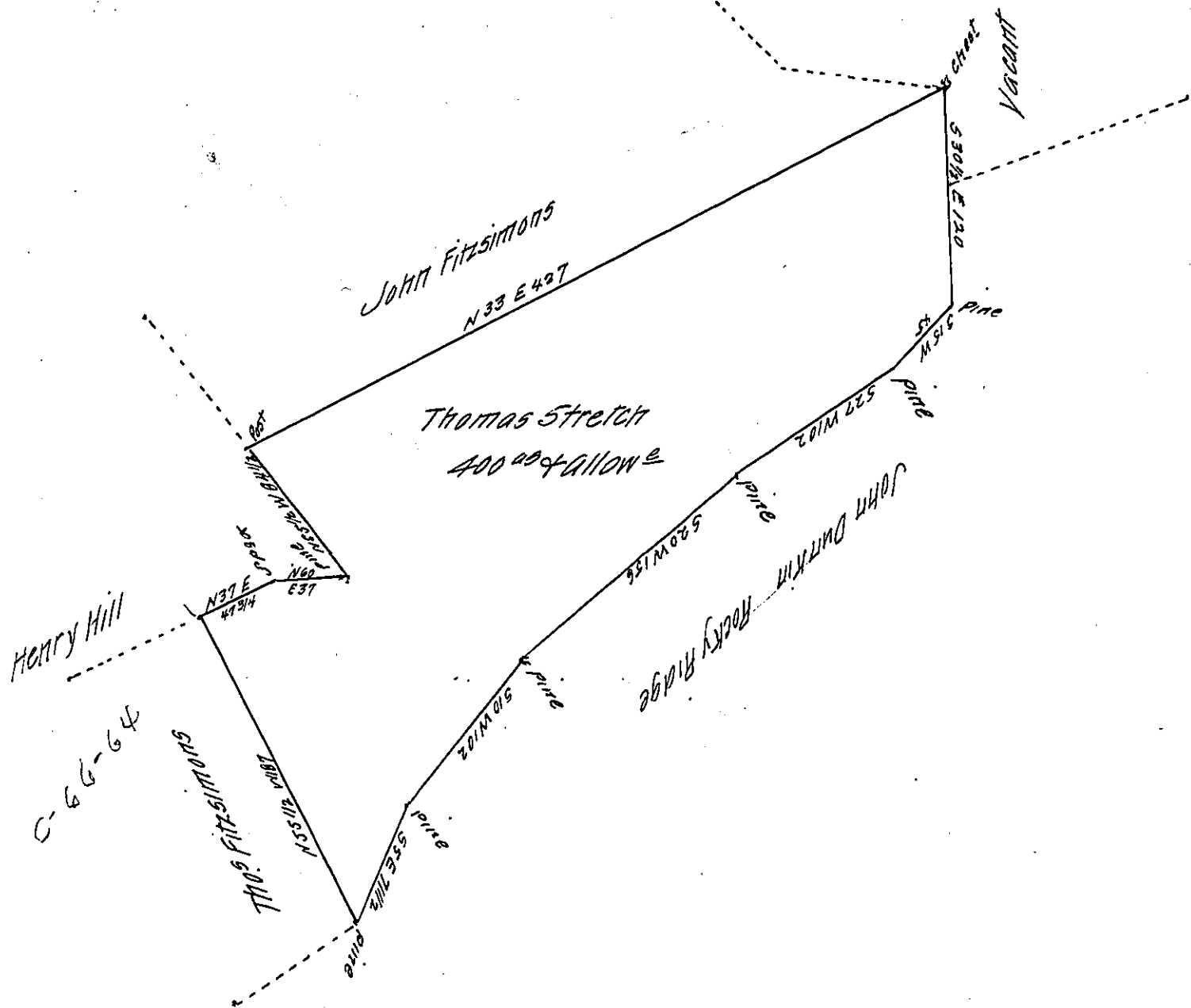


FORM No. 1.



A Draught of a Tract of land situated in Washington Township Franklin County
 Containing Four hundred acres and Allowance of six p Cent for Roads &c. Survey'd November
 19th 1808 for Samuel Hughes Esq. in pursuance of a Warrant granted Thomas Stretch
 Dated September 6th 1792 by Joseph Smively Junr. Ass^t of Thomas Kirby Esq. late Dept. Surveyor.
 as appears by an official Draught there of remaining in my office.

Certified this 6th day of March 1810

To Andrew Porter Esq.

Thomas Poe D.S.

Surveyor General of Penna.

IN TESTIMONY that the above is a copy of the original remaining on file in
 the Department of Internal Affairs of Pennsylvania, made
 conformably to an Act of Assembly approved the 16th day of
 February 1833, I have hereunto set my hand and caused
 the Seal of said Department to be affixed at Harrisburg,
 this second day of May 1907

Henry Houck
 Secretary of Internal Affairs.